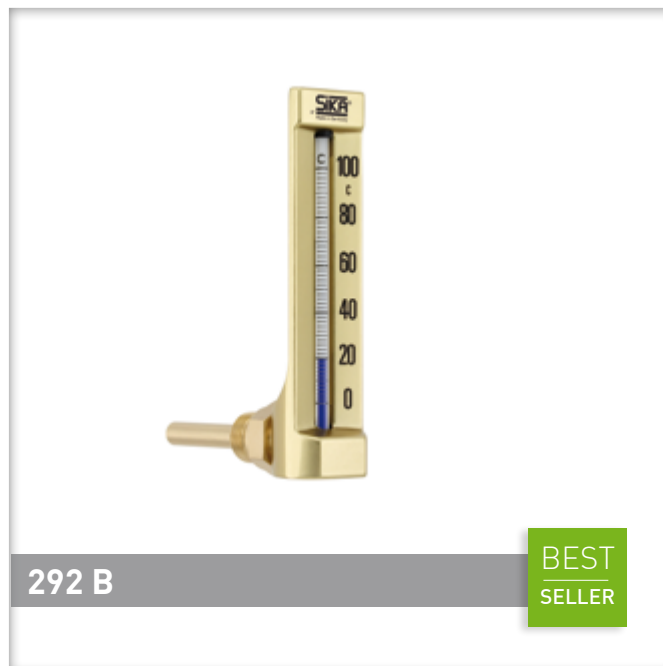


## Fixed male thread // Nominal size 200 and 150 // Aluminium anodized




### Your advantages

#### Series

**271 /272 / 291 /292 B**

- Accuracy according to DIN 16195
- No aging - no moving parts and no mechanical wear
- Lifetime warranty\*
- Completely without electrical auxiliary energy

### Technical data

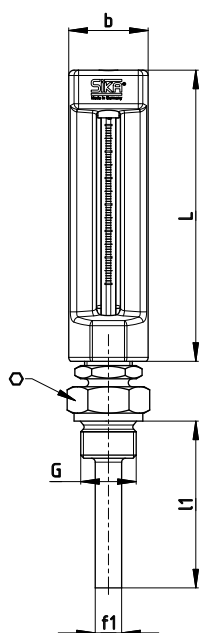
Type	271 B	272 B	291 B	292 B
Standard	DIN 16189 B, DIN 16190 S, S1 and DIN 16191 B, B1		DIN 16185 B and DIN 16186 S	
Version	Straight	Angle 90°	Straight	Angle 90°
Dimensions Housing	200 x 36 mm		150 x 36 mm	
Measuring range according to DIN	Between -30...250 °C			
Error limits according to DIN 16195	-30...100 °C = 2 °C 0...120 °C = 2 °C 0...200 °C = 4 °C		-30...120 °C = 2 °C 0...160 °C = 4 °C	
Medium / Application	Liquid and gaseous media			
Immersion tube length	Between 63...250 mm			
Immersion tube diameter	Ø 10 mm			
Process connection	Fixed male thread G½, G¾, M20 x 1.5, M27 x 2			
Pressure rating** → Immersion tube brass, brazed → Immersion tube steel or stainless steel, welded → Immersion tube special brass or CuNi30Fe	PN 16 PN 35 PN 16			
Medium temperature	See selected measurement range			
Ambient temperature	-20...60 °C			
Storage temperature	-40...100 °C			
Approvals				
				

\* Except glass breakage and improper installation.

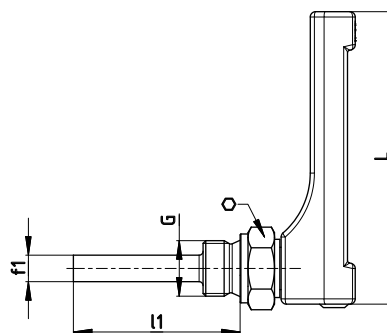
\*\* Non-binding guideline - For higher pressure loads, additional protection tubes have to be used.

Options	
For type	See separate data sheet
271 / 272 B	Process connection with union nut, Types Da / Dc
291 / 292 B	Version for serial applications Types HBZ / WBZ

Type 271 B / 291 B



Type 272 B / 292 B



Dimensions [mm]	L	f <sub>1</sub>	b	l <sub>1</sub>	G / ∅ Width across flats
291 B / 292 B	150	∅ 10	36	63	G½ / SW27
				100	G¾ / SW32
271 B / 272 B	200			160	M20 x 1.5 / SW27
				250	M27 x 2 / SW32

Material	
Housing	Warm pressed aluminium part, gold anodized
Thermometer capillary	Prismatic capillary tube of solid glass, bar-shaped, diameter approx. ∅ 6 mm, scale permanently burnt in
Thermometer filling → Blue	Petroleum
Material in contact with media	
Process connection	see immersion tube material
Immersion tube material → Standard → Optional	Brass, brazed Stainless steel, welded Special brass (sea water resistant) Copper nickel alloy CuNi30Fe (sea water resistant)

Order code											
Version		Nominal size									
Straight		200 mm	271								
Angle 90 °			272								
Straight		150 mm	291								
Angle 90 °			292								
Immersion tube type				2							
Type B - fixed male thread											
Display ranges											
-30...50 °C										35	
0...60 °C										06	
0...100 °C										10	
0...120 °C										12	
0...160 °C										16	
0...200 °C										20	
0...250 °C										25	
Scale											
Celsius °C										1	
Celsius and Fahrenheit (°C + °F)										2	
Thermometer filling											
Blue										1	
Immersion tube length (l <sub>1</sub> )											
63 mm								063			
100 mm								100			
160 mm								160			
250 mm								250			
Process connection											
G <sup>1</sup> / <sub>2</sub> / SW27								2			
G <sup>3</sup> / <sub>4</sub> / SW32								3			
M20 x 1.5 / SW27								7			
M27 x 2 / SW32								9			
Immersion tube material											
Brass									1		
Stainless steel									3		
Special brass									4		
Copper nickel alloy									5		
Example order number				271	2	35	1	1	063	2	1

If required please ask for our specification sheet „Immersion tube material“

#### BEST SELLER

Type		Immersion tube length (l <sub>1</sub> )	Order number								
271 B	Straight type, nominal size 200 mm, 0...100 °C, with fixed male thread G½, Immersion tube brass	63 mm	271	2	10	1	1	063	2	1	
271 B		100 mm	271	2	10	1	1	100	2	1	
291 B	Straight type, nominal size 150 mm, 0...100 °C, with fixed male thread G½, Immersion tube brass	63 mm	291	2	10	1	1	063	2	1	
291 B		100 mm	291	2	10	1	1	100	2	1	
292 B	Angle type, nominal size 150 mm, 0...100 °C, with fixed male thread G½, Immersion tube brass	63 mm	292	2	10	1	1	063	2	1	
292 B		100 mm	292	2	10	1	1	100	2	1	

