

# CE Multitester

# MI 2094

# Portable Appliance Tester



## **Withstanding voltage test Pload = 500 VA**

- Pre-set voltage in steps up to 5000 V AC.
- Pre-set voltage/time test program (t1, t2, t3; U1, U2).
- Timer from 1 s to 10 min.
- Tripping out test current from 1 mA up to 500 mA.
- Burn-out test.

## **Insulation resistance test**

- Test voltage 250 V, 500 V and 1000 V DC.
- Measuring range up to 1 GΩ.
- Programmable limits of resistance.
- Timer from 1 s to 10 min.

## **Leakage currents**

- Differential.
- Touch.
- Substitute.
- Programmable limits from 0.1 mA to 20 mA.
- Timer from 1 s to 10 min.

## **Continuity test**

- Test current 100 mA, 200 mA, 10 A or 25 A (voltage <12 V AC).
- Resistance threshold in steps from 100 mΩ to 2 Ω.
- Timer from 1 s up to 20 s.
- Voltage drop / wire section threshold scaled to 10 A AC.

## **Functional tests**

- Power, Apparent power, Cos φ, Voltage, Current, Frequency.

## **Discharge time**

- External, internal.

## **Memory and print-out of measurement reports**

- 1638 memory locations.
- PC software CE link with RS 232 communication cable.

## **Portable, multipurpose instrument for measurements in accordance with:**

IEC 60204-1  
Electrical equipment of machines  
IEC 60335-1  
Household and similar electrical appliances  
IEC 60439-1  
Switchgear and controlgear assemblies  
IEC 60598-1  
Luminaires  
IEC 60745  
Hand-held motor-operated tools  
IEC 60755  
Residual current operated protected devices  
IEC 60950  
Safety of information technology equipment  
IEC 61010-1  
Safety requirements for electrical equipment  
IEC 61029  
Transportable motor-operated tools  
IEC 61558-1  
Transformers and power supply units  
EN 60065  
Audio, video and similar electronic apparatus  
VDE 701 T1  
Repair and modification inspections  
VDE 702 T1  
Repeat tests of electrical appliances

## Technical specification

### Withstanding test 500 VA:

Trip-out current settable limit 0.5 ÷ 500 mA	100 V ÷ 999 V AC	±(2 % +5 dig.)
	1000 V ÷ 5 kV AC	±(3 % +5 dig.)

### Insulation resistance test:

Test voltage: 250 V, 500 V, 1000 V DC	0.000 ÷ 1.999 MΩ	±(5 % +10 dig.)
Current 1 mA min.	2.000 ÷ 199.9 MΩ	±(3 % +3 dig.)
Programmable resistance limits	200 ÷ 999 MΩ	±(10 % +10 dig.)

### Continuity test:

Test voltage <6 V AC	Test current 10 A, 25 A	0.000 ÷ 0.999 Ω	±(3 % +3 dig.)
Programmable resistance limits		1.000 ÷ 2.000 Ω	±(3 % +10 dig.)
	100 mA, 200 mA	0.00 ÷ 9.99 Ω	±(5 % +12 dig.)
		0.00 ÷ 10.00 V	±(3 % +3 dig.)

### Voltage drop test (scaled to 10 A AC):

### Discharge time test (internal, external):

### PE leakage current test (Programmable limits):

### Substitute leakage current test (Programmable limits):

### Touch leakage current test (Programmable limits):

Power, Apparent Power	Voltage	Current	Cos φ	Frequency
1 ÷ 199.9 W	0 ÷ 400 V	0 ÷ 0.999 A	0 ÷ 1.00	45 ÷ 65 Hz
±(5 % +10 dig.)	±(2 % +2 dig.)	±(3 % +5 dig.)	±(3 % +3 dig.)	±(0.1 % +3 dig.)
200 ÷ 3500 VA		1.00 ÷ 15.99 A		
±(5 % +3 dig.)		±(5 % +5 dig.)		

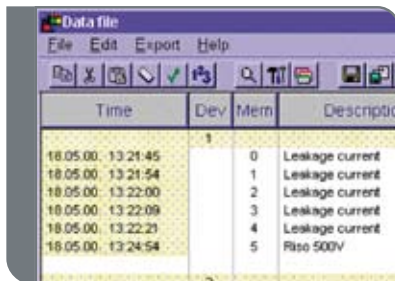
## General

Case:	shock proof plastic / portable
Power Supply:	230 V (50 Hz, 60 Hz)
Overtoltage category:	CAT III/300 V, CAT II/600 V
Pollution degree:	2
Degree of protection:	IP 50
Protection classification:	I
Display:	160 × 116 dot graphic matrix display with backlight
Memories:	1638
Dimensions (w × h × d):	410 × 175 × 370 mm
Weight (without accessories):	13.5 kg

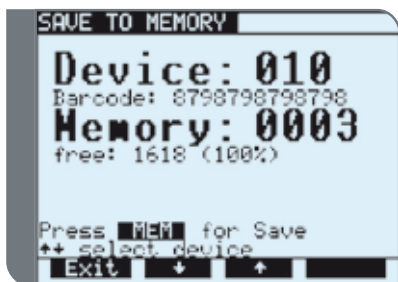
## Key Features



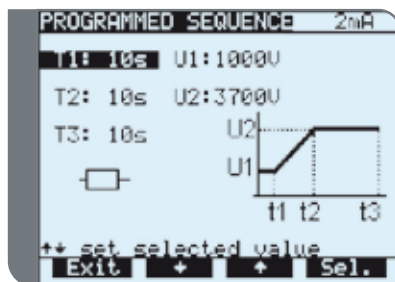
Inputs/outputs for manual or automatic settings.



PC Software CE Link.



Memorizing of particular testing results.



Wide range of simple menus for programming.

## Ordering information

### Standard set

MI 2094



Instrument CE MultiTester  
HV test pistol with 2 m cable, 2 pcs  
CONTINUITY test lead - 2.5 m, 2 pcs  
INSULATION test lead - 2.5 m, red  
INSULATION test lead - 2.5 m, black  
Alligator clip - black, 3 pcs  
Alligator clip - red, 2 pcs  
DISCHARGE TIME cable  
Mains cable  
Accessory bag  
Instruction manual  
Product verification data

## Optional Accessories

Photo	Order No.	Description
	A 0941	Remote control pedal
	A 0942	Warning lamp
	A 1014	Test tip, black
	A 1016	Test tip, red
	A 1017	EXT/DOOR IN cable
	A 1059	ISO-CONTINUITY adapter
	A 1060	Two way mains adapter
	A 1061	Bar code scanner
	A 1073	PC SW CE Link with interface cable
	S 1057	HV test cable with plug, 6 m set of 2 pcs
	S 1058	CONTINUITY test lead, 10 m, 2 pcs
	S 1072	CONTINUITY test lead with 2 pole alligator clip, 2.5 m, set of 2 pcs

Note! Photographs in this catalogue may slightly differ from the instruments at the time of delivery. Subject to technical change without notice.



**Measuring and Regulation Equipment Manufacturer**  
METREL d.d.  
Ljubljanska 77  
SI-1354 Horjul  
Tel: + 386 (0)1 75 58 200  
Fax: + 386 (0)1 75 49 226  
E-mail: metrel@metrel.si  
http://www.metrel.si