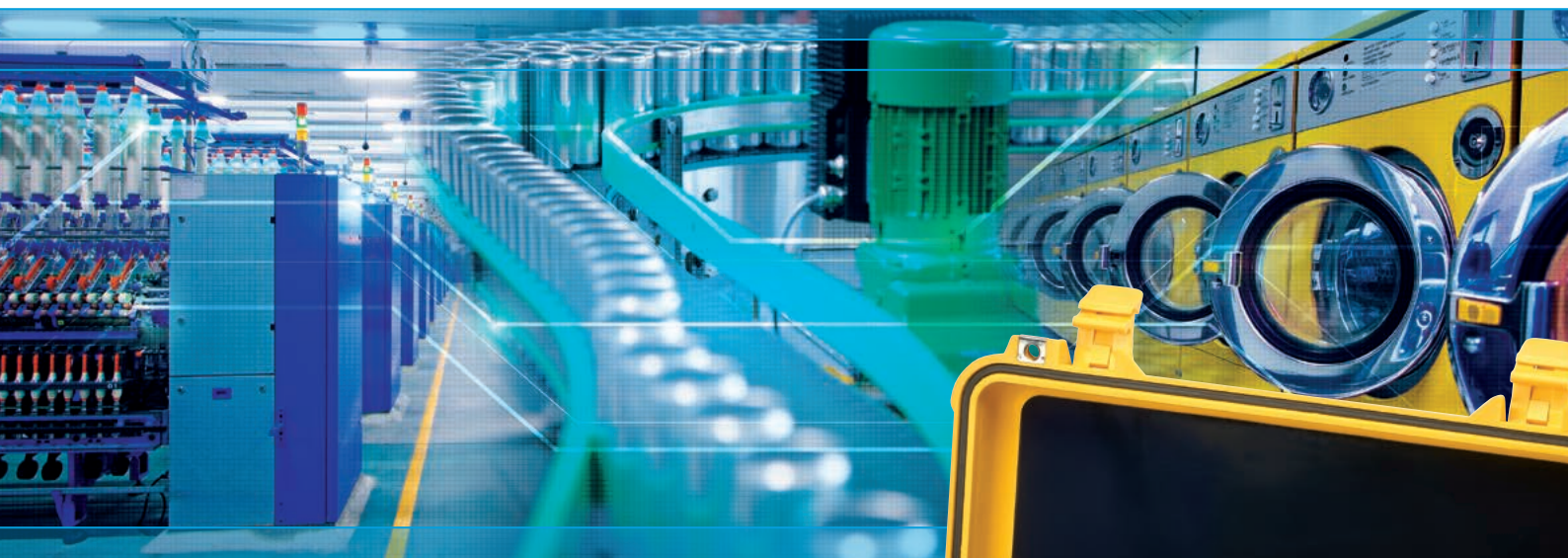




C.A 6165

Multi-function equipment tester



Test the electrical safety of your electric equipment manually or automatically

- Capacitive colour touch screen
- Automatic test sequences
- Storage of the tests on memory card up to 32 GB
- 5 kVAC/ 6 kVDC HV dielectric test, 25 A continuity, 1,000 V isolation
- Substitute direct leakage current, PE, differential leakage current and touch leakage current
- External and internal discharge time up to 10 s / 550 V peak
- P, Q, S, Pf, Cos ϕ , THDU, THDI, U and I functional test
- Inputs/outputs to pedal, indicator lamps, PC
- Compatible with TT, TN and IT networks, 230 V / 115 V



IP 50		MICRO SD			
IEC 60204	IEC 61439	IEC 60335	IEC 60950	IEC 50191	VDE 0701/0702

Measure up



The **C.A 6165** multi-function electrical equipment tester can be used to perform **all the measurements** needed to test the electrical safety of portable electric equipment, machines and switchboards. This makes it ideal for electrical safety testing and certification of equipment in the context of end-of-line production conformity checking, periodic inspections or maintenance.

In terms of applications, it will be used frequently by:

- ◆ Electrical equipment manufacturers for conformity checking ("CE" marking)
- ◆ Switchboard specialist for checking the low-voltage cabinets
- ◆ Industrial maintenance firms needing to check the conformity of a fleet or installation
- ◆ After-Sales Service companies repairing and checking the conformity of equipment with anomalies
- ◆ Certification organizations for periodic inspections
- ◆ Technical education

Ethernet, USB, SD Card and Bluetooth communication

RS232 connections

Inputs

Mains power supply

Fuses

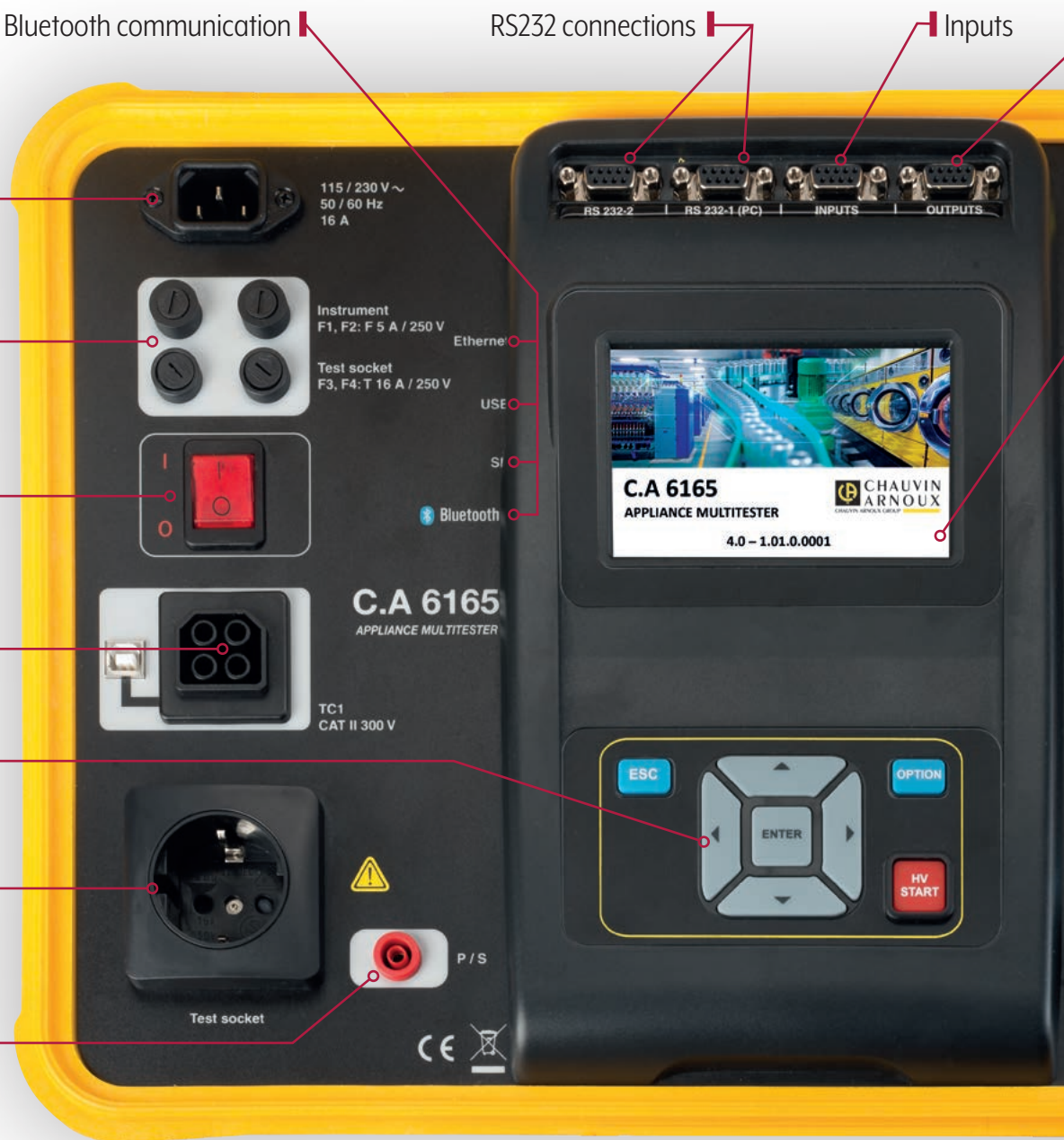
On /Off switch with built-in LED

TCI test connectors for external test adapters

Keypad

Test connector (230 V)

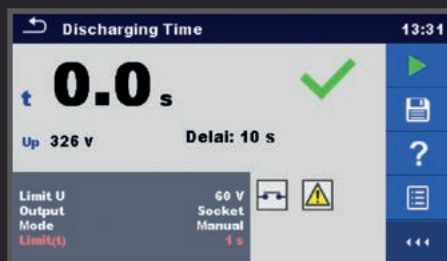
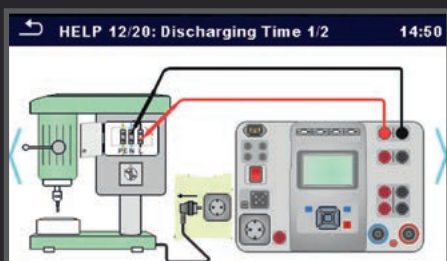
Probe connector



Direct access to the various tests

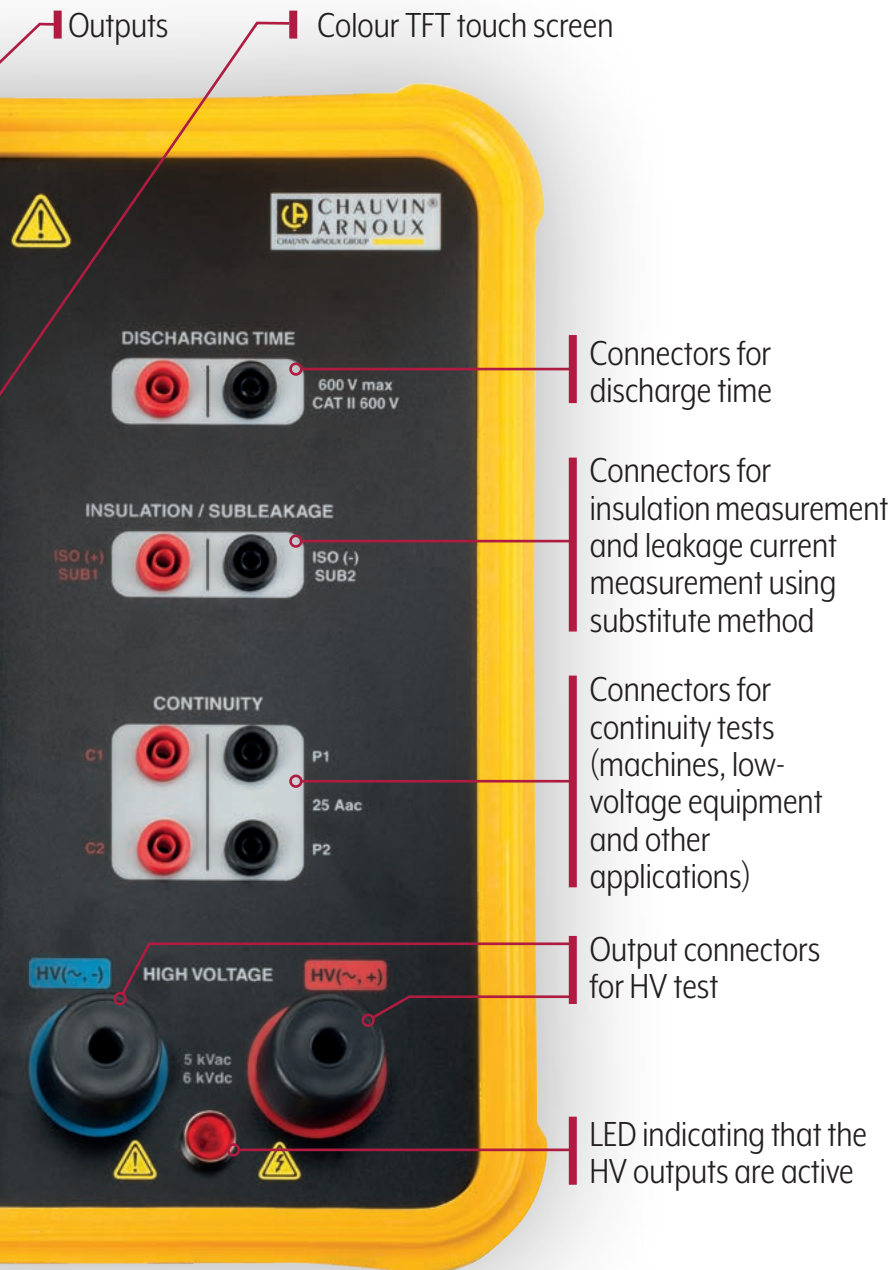
Connection diagrams

Results screens

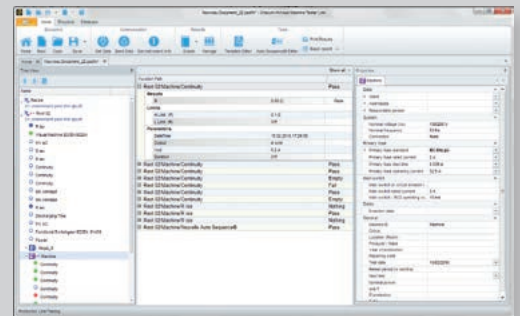


All the **measurements** and **tests** required for this conformity checking are available:

- ◆ 200 mA, 4 A, 10 A and 25 A continuity
- ◆ TRMS leakage and load currents
- ◆ Voltage / Frequency
- ◆ Leakage current by substitute method
- ◆ Differential leakage current
- ◆ Touch leakage current
- ◆ Earth leakage current (PE)
- ◆ Functional test with consumption measurement
- ◆ AC and DC dielectric tests
- ◆ Discharge time
- ◆ Functional and visual inspection
- ◆ 50 V / 100 V / 250 V / 500 V and 1,000 V insulation resistance
- ◆ Power values (active, apparent & reactive) & THD



MTLink software

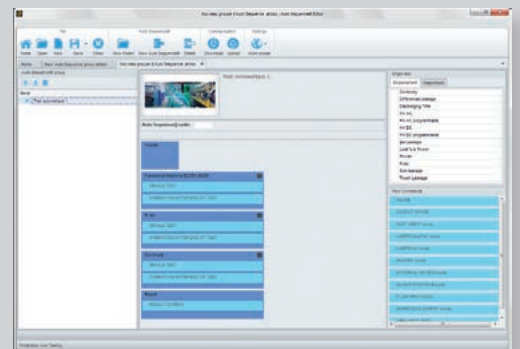


For simple report generation according to the applicable standards.

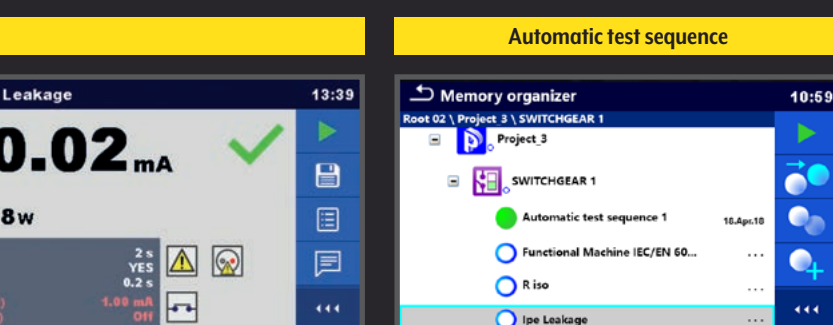
The analysis part is simplified by the PC software delivered as standard, enabling you to:

- Download the test results onto a PC for archiving in a database and report generation.
- Download test plans from the PC into the instrument to perform predefined tests.
- Define automatic test sequences.

Auto-sequence



Print your measurement reports



C.A 6165 Technical Specifications

High voltage					
AC / AC Programmable	Range	0 V to 1999 V		2 kV to 5.99 kV	
	Resolution/Accuracy	1 V / ± 3 % R		10 V / ± 3 % R	
DC / DC Programmable	Range	0 V to 1,999 V		2 kV to 6.99 kV	
	Resolution/Accuracy	1 V / ± 3 % R		10 V / ± 3 % R	
Courant	Range	AC: I apparent & resistive 0 mA to 99.9mA - I capacitive: -99.9 mA to + 99.9 mA - DC: 0.01 mA to 9.99 mA			
	Resolution/Accuracy	AC: I apparent: 0.1 mA / ±3% R ± 3 cts, indicative for I capacitive & I resistive - DC: 0.01 mA / ± (5 % R + 3 cts)			
0.2 A ; 4 A ; 10 A or 25 A continuity, voltage drop (10 A)					
	Range	0 to 19.99 Ω	20 to 99.9 Ω	100 to 199.9 Ω	200 to 999 Ω
	Resolution	0.01 Ω	0.1 Ω	0.1 Ω	1 Ω
	Accuracy	± (2 % R + 2 cts)	± 3 % R	± 5 % R	-
	Voltage drop (10A)	0.00V to 99.9V			
Insulation					
	Voltage	50 V / 100 V		250 V / 500 V / 1,000 V	
	Range	0 to 19.99 MΩ	20 MΩ to 99.9 MΩ	0 to 19.99 MΩ	20 MΩ to 199.9 MΩ
	Resolution	0.01 MΩ	0.1 MΩ	0.01 MΩ	0.1 MΩ
	Accuracy	± (5 % R + 2 cts)	± 20 % R	± (3 % R + 2 cts)	± 10 % R
Leakage current					
	Method	Substitute	I PE	Differential	Touch
	Range	0.00 to 19.99 mA	0.00 to 19.99 mA	0.00 to 19.99 mA	0.00 to 19.99 mA
	Resolution	10 µA	0.01 mA	0.01 mA	0.01 mA
	Accuracy	± (5 % R + 3 cts)	± (3 % R + 3 cts)	± (3 % R + 5 cts)	± (3% R + 3 cts)
34 V, 60 V and 120 V discharge time					
	Time	Range : 0 to 9.9 s	Resolution : 0.1 s	Accuracy : ± (5% R + 2 cts)	
	Up voltage	Range : 0 to 550 V	Resolution : 1 V	Accuracy : ± (5% R + 3 cts)	
Power values					
		Active (P)	Apparent (S)	Reactive (Q)	
	Range/Resolution	0 to 3.70 kW / 0.01 W to 10 W	0 to 3.70 kVA / 0.01 VA to 10 VA	0 to 3.70 kVAr / 0.01 VAR to 10 VAR	
	Accuracy	± (5 % R + 5 cts)	± (5 % R + 10 cts)	± (5 % R + 10 cts)	
	Other	PF, Cos φ, THDi , THDu ; (5 % R + 5 D)			
	Voltage	0.0 V to 199 V / 0.1V / ± (3 % R + 10 cts)		200 to 264 V / 1 V / ± 3 % R	
	Current	0 to 999 mA / 1 mA / ± (3% R + 5 cts)		1.00 to 16.00 A / 10 mA / ± 3 % R	
General specifications					
	Display	Colour TFT screen, 480 x 272 pixels			
	Storage	microSD card			
	Communication interfaces	RS232, USB, Ethernet, Bluetooth, Inputs / Outputs (2 x DB9)			
	Power supply	110 V / 230 V - 50 Hz / 60 Hz ; Max. consumption: 600 W / 4.5 kW if charged on mains test socket			
	Dimensions / weight	435 x 292 x 155 mm / 17 kg			
	Environment	Operating temperature: 0 °C to +40 °C; Storage: -10 °C to + 60 °C			
	Protection	IP40 open / IP50 closed			
	Electrical safety	300 V CAT II / 600 V CAT II (DISCHI / DISCH2)			

State at delivery

- A **C.A 6165** delivered with
- 2 x HV test guns with HV cables 2 m long
 - 1 x Certificate with measurement report
 - 1 x RS232 cable
 - 1 x USB cable
 - 1 x CD-Rom containing the User's Manuals and the MTLINK software
 - 1 x EURO mains power cable
 - 1 x standard carrying bag
 - 2 x double continuity cables 2.5 m long
 - 1 x set of red/black insulation cables 2.5 m long
 - 1 x single red continuity cable 1.5 m long
 - 2 x black crocodile clips
 - 3 x red crocodile clips
 - 2 x red and black 1kV CAT IV test probes
 - 1 x EURO discharge cable
 - 1 x safety datasheet for finished products
 - 1 x FR/GB Quick Startup Guide in booklet format (DE/ES/IT on CD-Rom)



Optional accessories

- Remote-control pedal
- 2-colour indicator lamps
- 4-colour indicator lamps
- Power adapter for indicator lamps

References

C.A 6165	P01145851
Control pedal	P01102177
2-colour indicator lamp	P01102178
4-colour indicator lamp	P01102179
Power adapter for lamps	P01102180

FRANCE
Chauvin Arnoux
 190, rue Championnet
 75876 PARIS Cedex 18
 Tel: +33 1 44 85 44 38
 Fax: +33 1 46 27 95 59
 export@chauvin-arnoux.fr
 www.chauvin-arnoux.com

UNITED KINGDOM
Chauvin Arnoux LTD
 Unit 1 Nelson Ct, Flagship Sq, Shaw Cross Business Pk
 Dewsbury, West Yorkshire - WF12 7TH
 Tel: +44 1924 460 494
 Fax: +44 1924 455 328
 info@chauvin-arnoux.co.uk
 www.chauvin-arnoux.com

MIDDLE EAST
CHAUVIN ARNOUX MIDDLE EAST
 P.O. BOX 60-154
 1241 2020 JAL EL DIB - LEBANON
 Tel: +961 1 890 425
 Fax: +961 1 890 424
 camie@chauvin-arnoux.com
 www.chauvin-arnoux.com