

Locate wires and cables with the LKZ-720 Wire Tracer

Main features

- detection of wires and cables (live or not)
- tracing underground cables
- tracing conductive water and heating pipelines
- flow and accurate locating the object
- phase detection mode
- operation in wide range of rated voltage, up to 500 V RMS
- five modes of wire tracer operation - voltage, current, current-voltage, power and clamp
- additional accessories enable precise localization - such as contact or non-contact probes and measurement clamp

...and much more

- the function 3D in the receiver - detecting the direction of current
- receiver operation with four transmitters at the same time to locate interruptions or distinguish wires
- a LED bright torch
- headphone socket in receiver
- screens backlight for work in dark
- transmission battery status and settings of the transmitter to the receiver
- measurement of voltage at the object to 500 V RMS
- three levels of transmitter amplification
- automatic or manual selection of transmitter operation modes
- software upgrade via USB

LKO-720
receiver



LKO-720

CAT III

600 V



LKO-720



LKN-720



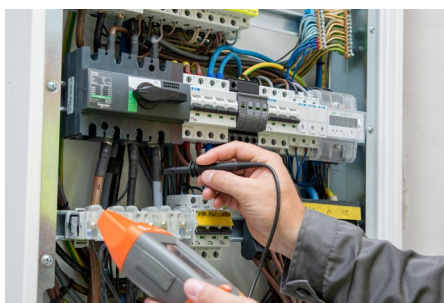
LKN-720
transmitter



Application

Detection and tracing cables in ceilings, walls and floors

In response to the needs of customers, the LKO-720 has a specially designed 3D antenna that raises the precision of the wire tracing. Determine direction of wires in concrete up to 5 cm will not be a problem now.

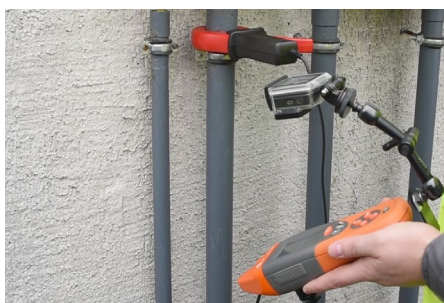


Locating power points and switches in buildings

pulse generated by a LKN-720 transmitter with a specific frequency allows to locate and identify sockets and switches in energized and de-energized circuits.

Identification of fuses on the distribution board

Thanks to the precise sensor in LKO-720 and additional contact and non-contact probes, identify of breakers and fuses now will be easily and time-saving.



Possibility to tracing in no access conductors

LKO-720 with C-8 clamp used in the current mode or in other mode forcing current, allows to uniquely identify wire or cable with a forced current signal.

Non-contact detection of live cables

LKO-720 allows to precisely detect energized wires in air and concrete without additional probes.



Additional areas of use

- detection of breaks in cables and wires
- locating short circuits between leads
- tracing shielded cables
- tracing cables in metal ducts
- tracing underground cables
- tracing conductive water and heating pipelines



Technical specification

insulation type	double, acc. to EN 61010-1	
transmitter measurement category	III 600 V acc. to EN 61010-1	
transmitter ingress protection rating acc. to EN 60529	IP67	
receiver ingress protection rating acc. to EN 60529	IP40	
transmitter power supply	4 x AA alkaline batteries or 4 x Ni-MH rechargeable batteries	
maximum transmitter operating voltage	500 V RMS	
maximum depth of the analysed object	("I" mode) 2 m	
maximum range of contactless neon probe	in air	50 cm
	in concrete	5 cm
receiver power supply	9 V 6LR61 alkaline battery	
operating temperature	-10°C...+50°C	

Standard accessories



LKN-720 transmitter
WMGBLKN720



LKO-720 receiver
WMGBLK0720



M-6 carrying case
WAFUTM6



**test lead with banana plugs;
1 kV; 1.2 m; red**
WAPRZ1X2REBB



red crocodile clip 1 kV 20 A
WAKRORE20K02



**test probe with banana socket;
1 kV; red**
WASONREOGB1



**test lead with banana plugs;
1 kV; 1.2 m; blue**
WAPRZ1X2BUBB



blue crocodile clip 1 kV 20 A
WAKROBU20K02



**test probe with banana socket;
1 kV; blue**
WASONBUOGB1



**test lead with banana plugs
on reel; 1 kV;
20 m; red**
WAPRZ020REBBSZ



**earth contact test
probe (rod) 26 cm**
WASONG26



non-contact probe
WASONBDOT

Additional accessories



**N-1 transmitting
clamp (Φ=52 mm)**
WACEGN1BB



**Magnetic voltage
adapter, black**
WAADAUMAGKBL



**pin probe, black
11 kV (banana
socket)**
WASONBLOGB11



C-8 clamp probe
WASONCEGC8



**Magnetic voltage
adapter, blue**
WAADAUMAGKBU



contact probe
WASONDOT



**double-wire test lead
2 m, for N-1 clamps
(banana plugs)**
WAPRZ002DZBB



**M1 hanging
hook straps**
WAPOZUCH1