

SM61 DATA LOGGER WITH WWW SERVER

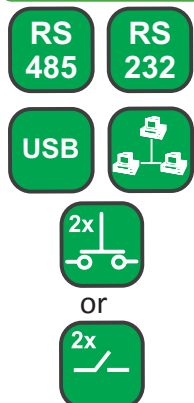
**INNOVATION
2012
AWARD**



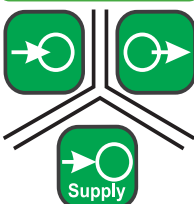
FEATURES:



INPUTS/ OUTPUTS:



GALVANIC ISOLATION:



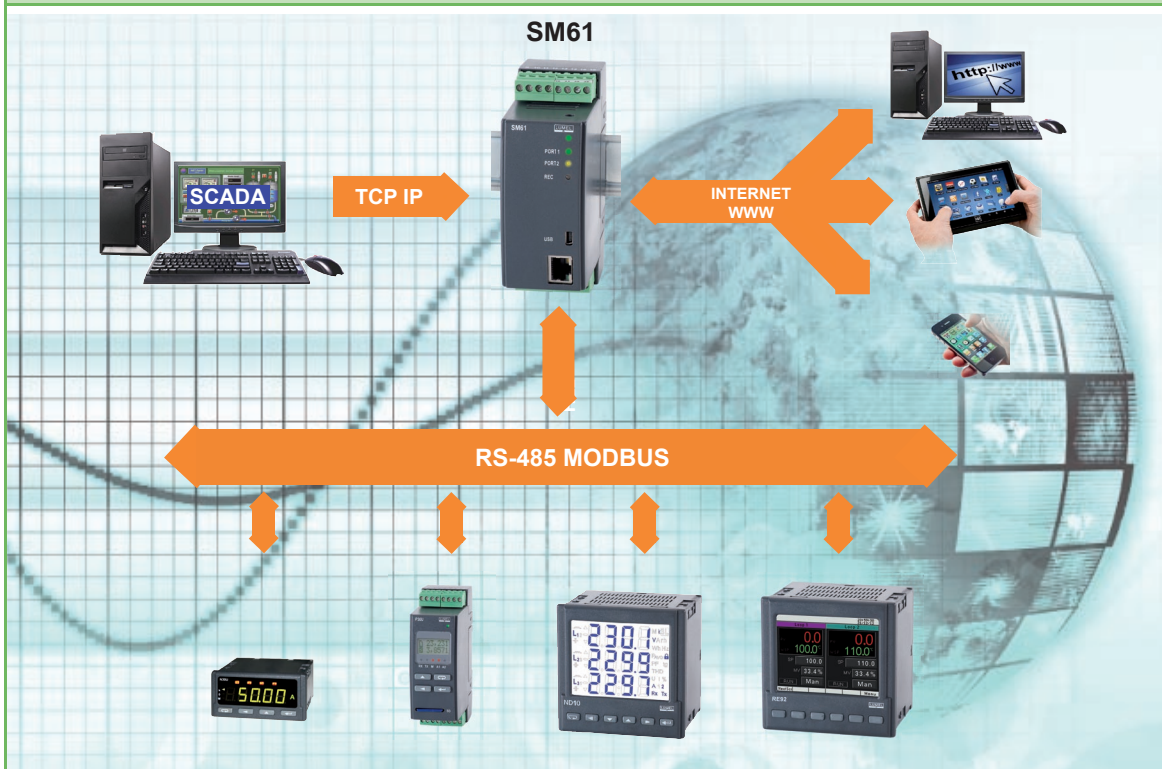
Export department:
English: +48 68 32 95
302 / 321 / 276 / 386 / 233
German: +48 68 32 95 305
Russian: +48 68 32 95 321
Fax: +48 68 32 54 091
e-mail: export@lumel.com.pl

LUMEL S.A.
ul. Sulechowska 1
65-022 Zielona Góra
POLAND
WWW.LUMEL.COM.PL

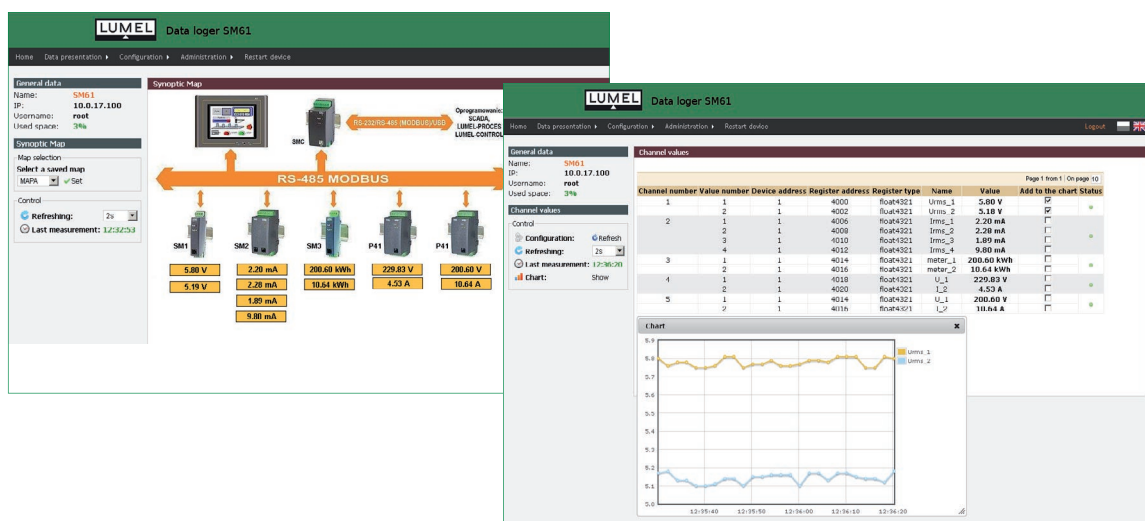


- Visualisation of current and archived data according to customer configuration (synoptic maps, charts, tables) by any web browser.
- Readout up to 2500 values from slave devices (up to 100 devices, each 25 registers).
- User-friendly application for data configuration.
- 1 GB Flash memory.
- Built-in FTP and web servers.
- Alarms or binary inputs for control of archiving.
- RTC (real time clock).
- Possibility of simultaneously work by many users.
- User's access control by a password.

APPLICATION EXAMPLE



CONFIGURATION AND VISUALISATION BY ANY WEB BROWSER



Configuration web:

- configuration of IP settings and connection configuration of selected SM61 module,
- channels configuration of SM61 module,
- channels visualization of SM61 module.

INTERFACE

Interface	Port 1: RS-485, RS-232,	Port 2: RS-485	USB	Ethernet 10/100Base-T
Function	communication with PC and HMI panels and other master devices	communication with Slave devices	device configuration	device communication and configuration
Baud rate	1200, 2400, 4800, 9600, 19200, 38400, 57600, 115200 bit/s		115200 bit/s	10, 100 Mbit/s
Information unit	1 start bit, 7 or 8 data bits, 1 odd/even parity bit, 1 or 2 stop bits		1 start bit, 8 data bits, 1 even parity bit, 1 stop bit	TCP/UDP
Transmission protocol	MODBUS RTU			TCP/IP, HTTP, ICMP, DHCP, ARP, Modbus TCP, FTP
Remarks	max. cable length depends on the baud rate		max. cable length: up to 2 m	max. cable length: up to 100 m

EXTERNAL FEATURES

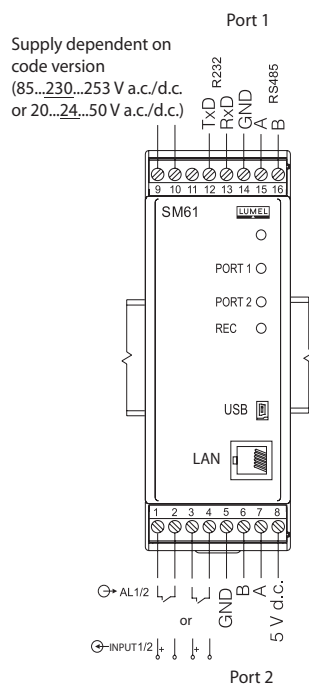
Weight	< 0.25 kg		
Overall dimensions	45 × 120 × 100 mm		
Protection grade (acc. to EN 60529)	from the housing side: IP40		from the terminal side: IP20
Fixing way	DIN rail 35 mm		

RATED OPERATING CONDITIONS

Supply voltage	20...24...50 V a.c./d.c. or 85...230...253 V a.c./d.c. 40...50/60...440 Hz	power consumption: ≤ 4 VA
Temperature	ambient: 0...23...55°C	storage: -20...70°C
Relative humidity	≤ 95%	condensation inadmissible
Operating position	any	
External magnetic field	< 400 A/m	

SAFETY AND COMPATIBILITY REQUIREMENTS

Electromagnetic compatibility	noise immunity	acc. to EN 61000-6-2
	noise emissions	acc. to EN 61000-6-4
Safety requirements	installation category III	acc. to EN 61010-1
	pollution grade 2	
Maximal phase-to-earth operating voltage	for supply circuits: 300 V	
	for other circuits: 50 V	

CONNECTION DIAGRAM

ORDERING CODE

SM61 -	X	X	XX	X	X
Supply voltage:					
85...253 V a.c./d.c.	1				
20...50 V a.c./d.c.	2				
Input/output:					
2 relay outputs	1				
2 binary inputs	2				
Version:					
standard			00		
custom-made*			XX		
Language:					
Polish				P	
English				E	
other*				X	
Acceptance tests:					
without extra requirements				0	
with an extra quality inspection certificate				1	
acc. to customer's request*				X	

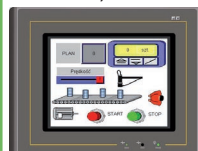
* - After agreeing with the manufacturer

Order example:

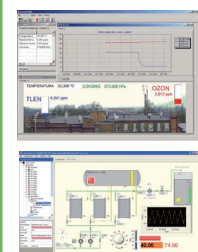
The code **SM61 - 1 2 00 E 1** means the SM61 industrial www server, with voltage supply 85...253 V a.c./d.c., with 2 binary inputs, standard version, English language, with an extra quality inspection certificate.

SEE ALSO:


**I/O modules
SM series**
SM1, SM2, SM3,
SM4, SM5.



**HMI panels
MT series.**


SCADA

Lumel-Process
For more information
about LUMEL's
products please visit
our website:
www.lumel.com.pl

**INNOVATION
2012
AWARD**
**DYPLOM
INNOWACJE 2012**


Aparatura kontrolna pomiarowa
i systemy sterowania

Lumel S.A.

Moduł zbierania danych
z serwerem www
TYP SM61


Export department:

English: +48 68 32 95
302 / 321 / 276 / 386 / 233
German: +48 68 32 95 305
Russian: +48 68 32 95 321
Fax: +48 68 32 54 091
e-mail: export@lumel.com.pl

LUMEL S.A.
ul. Sulechowska 1
65-022 Zielona Góra
POLAND

WWW.LUMEL.COM.PL